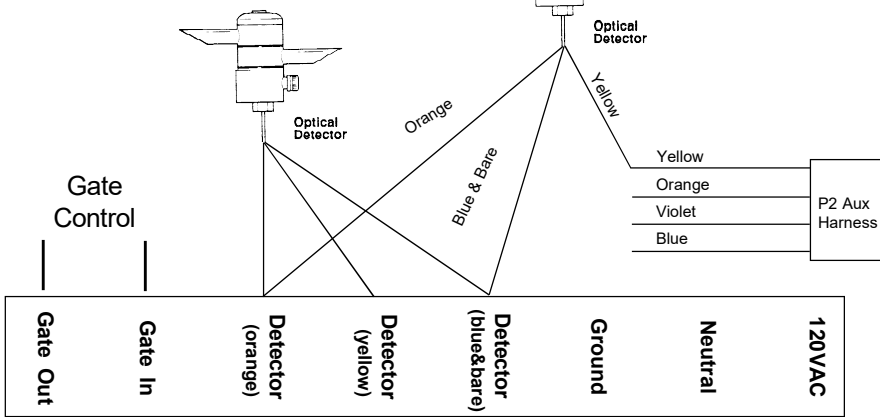
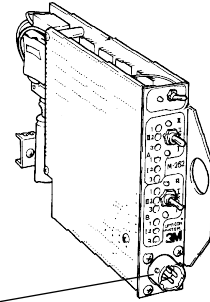


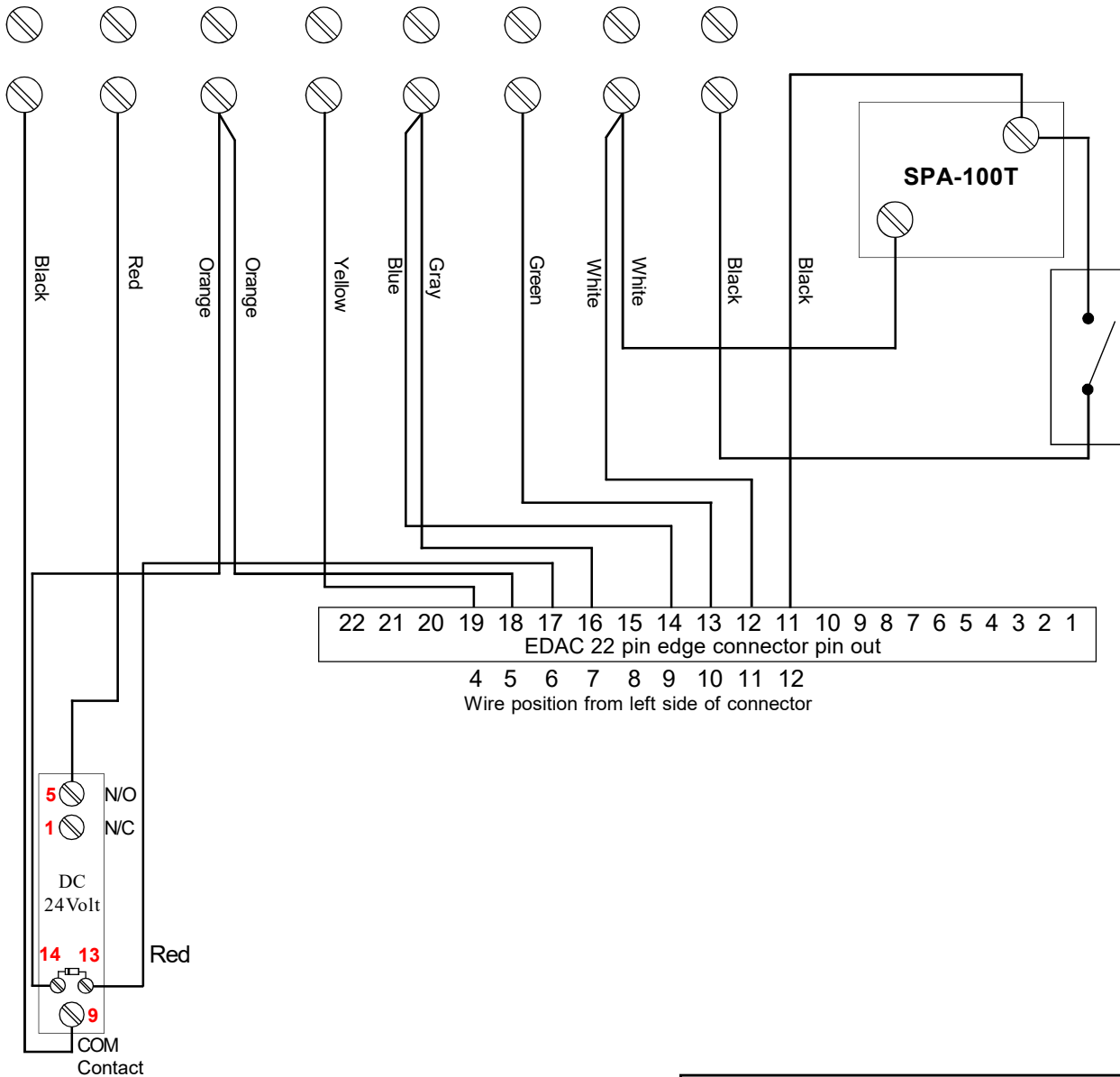
(Optional)
Auxilliary Optical Detector

Primary Optical Detector



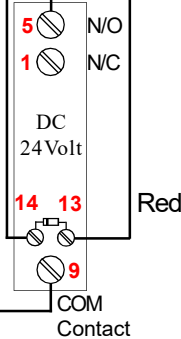
Solder yellow wire from Auxilliary Optical Detector (138 cable) to yellow wire of P2 Aux Optical Detector Harness. The P2 Aux Optical Detector Harness plugs into the front of the Discriminator Module.

Individually tape the Orange, Violet and Blue wires of the P2 Aux Optical Detector Harness.



22 21 20 19 18 17 16 15 14 13 12 11 10 9 8 7 6 5 4 3 2 1
EDAC 22 pin edge connector pin out

4 5 6 7 8 9 10 11 12
Wire position from left side of connector



<p>RTC RTC Manufacturing, Inc.</p> <p>1016 Enterprise PL Arlington, TX 76015 (800) 782-8721 (817) 274-3610 fax</p>		PROJECT
		OPTICOM GATE OPENER
DATE	DESCRIPTION	ASSEMBLY NUMBER:
REV 1 11/16/98	WIRING DIAGRAM	500632
REV 2 11/09/2007		
REV 3		

Added Auxilliary Optical Detector connection
Relay upgrade to five blade