

RTC Connect Training Aid

Reading and Writing Time Switch Programming

In this training you will learn how to write programming to a time switch in the field. You will also learn how to read the programming back.

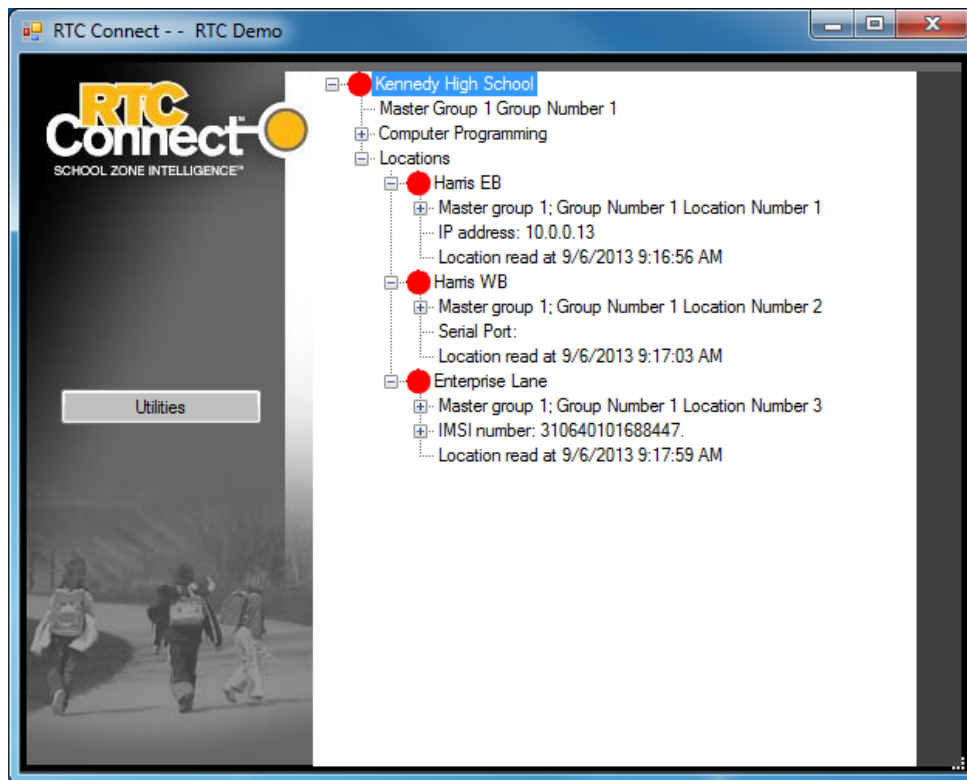
Objectives:

1. Write programming to a time switch.
2. Read programming from a time switch.

Step 1

In our example we have three locations. Each of the three locations represents one of the communication modes to a time switch in the field.

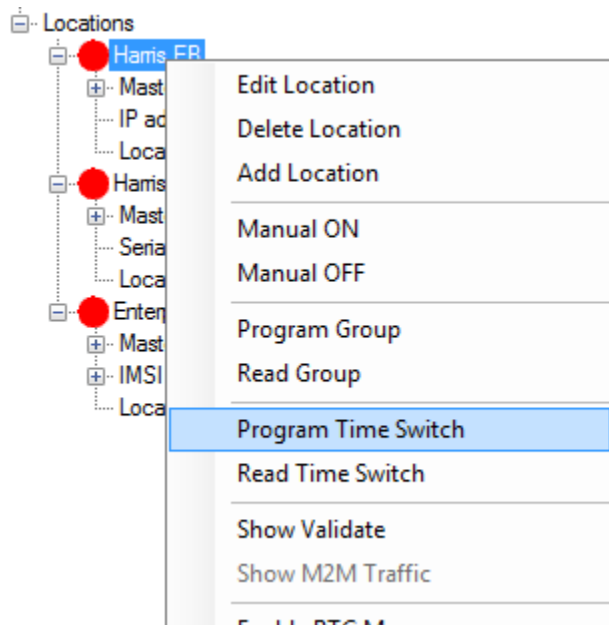
In the diagram below Notice that Harris EB is connected through the IP address 10.0.0.13. Similarly notice that Harris WB is connected through a serial port connected to a radio network. Similarly Enterprise Lane has an M2M device with imsi number 310640101688447.



RTC Connect Training Aid

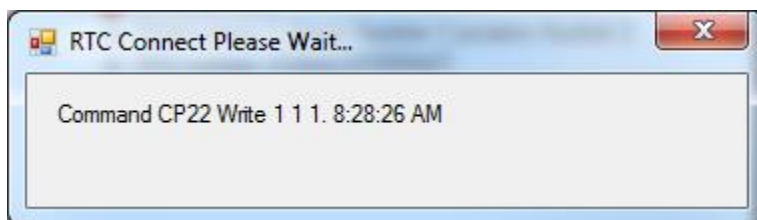
To program a time switch with its calendar and dayplans is called programming the time switch. Once the time switch is programmed it will run the calendar and dayplans setup in rtc connect. While being programmed it also gets the correct time and date information from the PC. It is important that your PC have the correct time and date while programming the time switch.

Simply right click the location and you will see the menu below.



Select the 'Program Time Switch' menu item. At this point RTC Connect will send the programming to the time switch. This may take anywhere from 10 seconds to a minutes depending on which method of communication is selected. M2M communications take about a minute, radio and IP are about 10 seconds.

While it is programming you will see a dialog box like the one shown below.



When the dialog box above is no longer visible it is done.

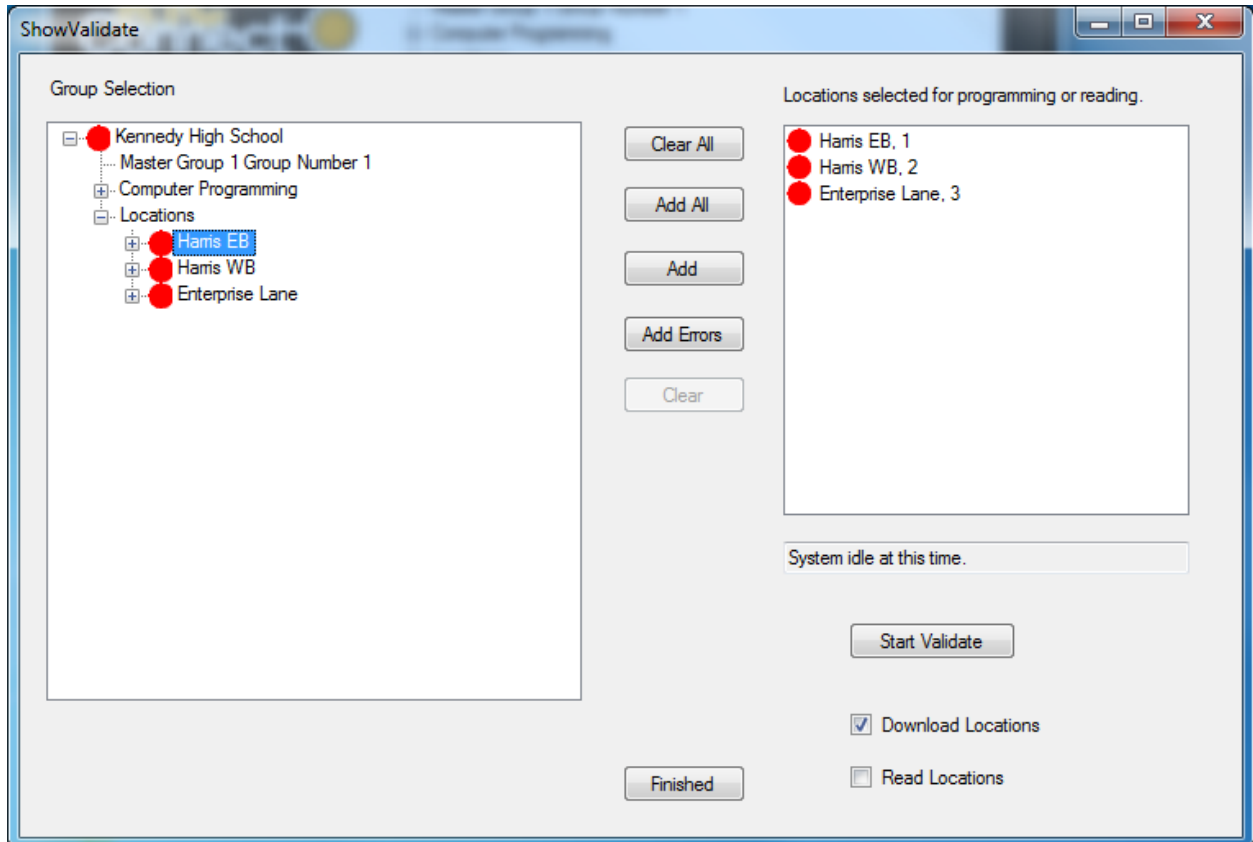
If you have more than one time switch to program you can program all the time switches in one group with the menu item 'Program Group'. When you click this menu item all the time switches in the group will get programmed.

You may also program many groups and locations in the validate dialog box. You can get to this by clicking 'Show Validate' in the menu.

RTC Connect Training Aid

In the dialog box shown below the 'Add All' button has been pressed and all three locations are scheduled for programming. Notice also the 'Download Locations' checkbox has been checked. This will setup the program to send the programming to all locations in the right hand list.

Click start validate for this to happen.



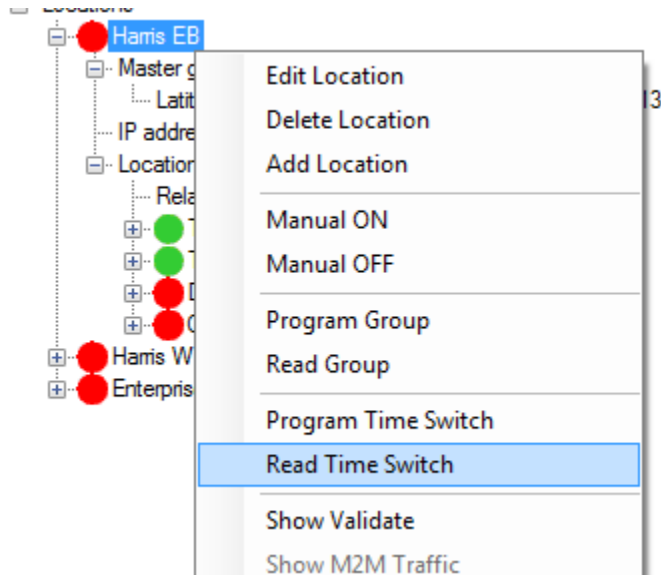
At this point in time in our example all three locations have been programmed.

RTC Connect Training Aid

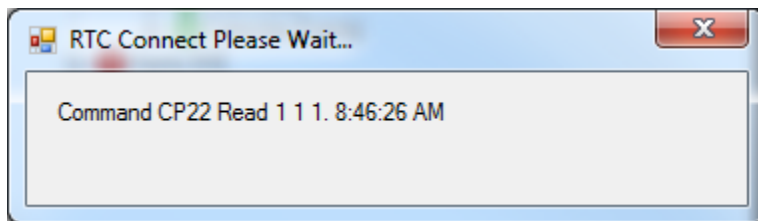
STEP 2

Reading a location returns to RTC Connect all the programming, calendar and time information from the time switch in the field. Notice in our example shown below the clock was read at 9:16 Am and the red balls indicate the time switch does not match the programming in the computer.

Since we just programmed the time switch step 1 when we read it we should now get the correct information back. To read the time switch right click the location and select the 'Read Time Switch' as shown below.



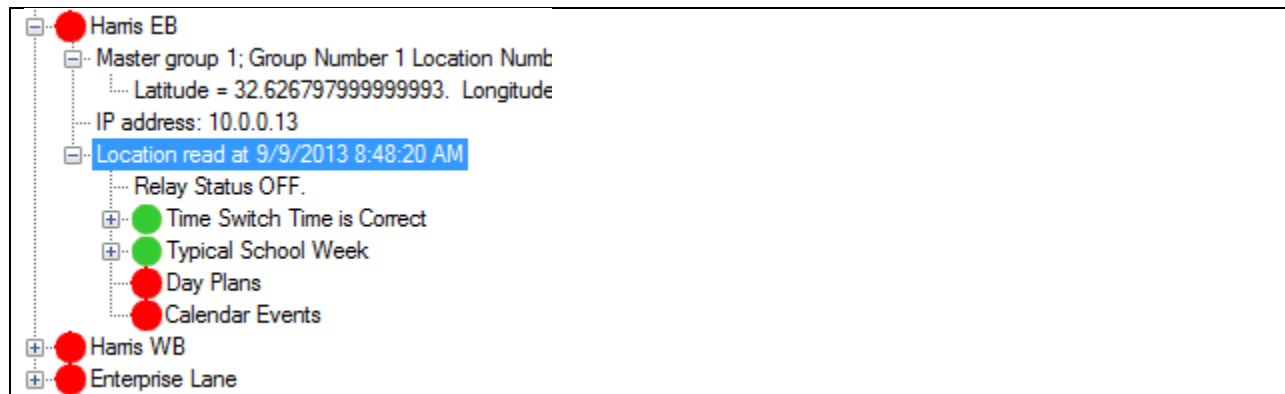
You will see a dialog box like the one shown below when reading.



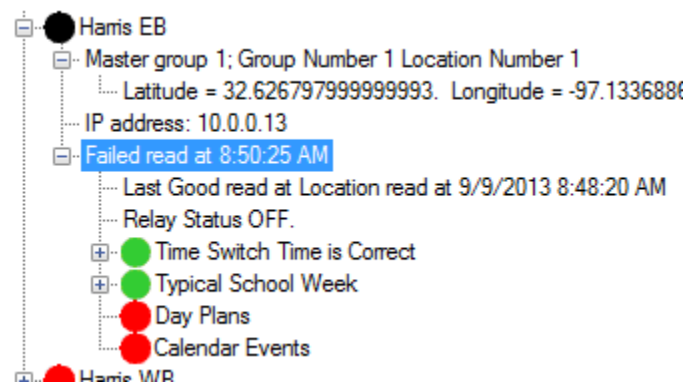
Notice that after the read, in our case, the Location is now all green indicating the read took place and the results were good in the sense that the time switch programming and actual time match the PC data.

If the time switch is not programmed correctly you will see a display similar to the one below.

RTC Connect Training Aid



If the time switch is not available for any reason you will see the following.



Notice it tells us it failed to read the time switch at 8:50:25 AM. It also tells us the last good read of the time switch was at 8:48:20 AM. In this sense good means a read was attempted and the data came back. The data may or may not have matched the calendar and dayplans, but it arrived.

As in the writing you may read an entire group at once, or as many time switches as you want with the read group and validate options discussed in step 1.

Conclusion

At this point we have learned how to read and write a time switch. This allows remote users to connect with the time switches in the field.