

# ESR 901 Setup

1. Create a hyperterminal with 9600 8 N 1 on your computer.
2. Connect a NULL modem cable from the PC to the connector on the ESR 901. (Fig. 1)
3. Place the Run/Console switch to Console. (Fig. 1)
4. Place the DB9/Terminal switch to DB9. (Fig. 1)



Fig. 1

5. Hit spacebar in Hyperterminal. You will see this screen. (Fig. 2)

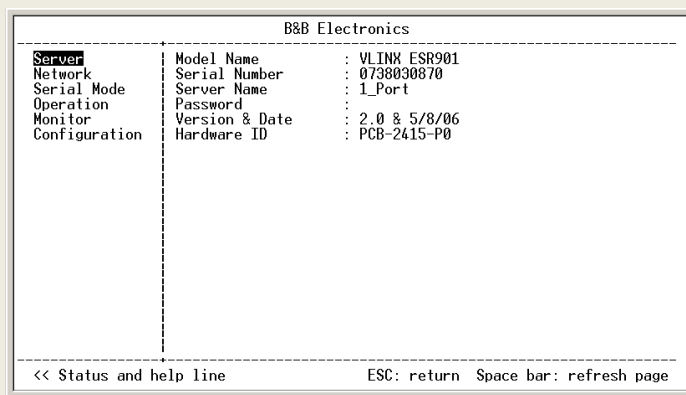


Fig. 2

6. Arrow down to Network. Setup IP address, mask, and gateway. (Fig. 3)

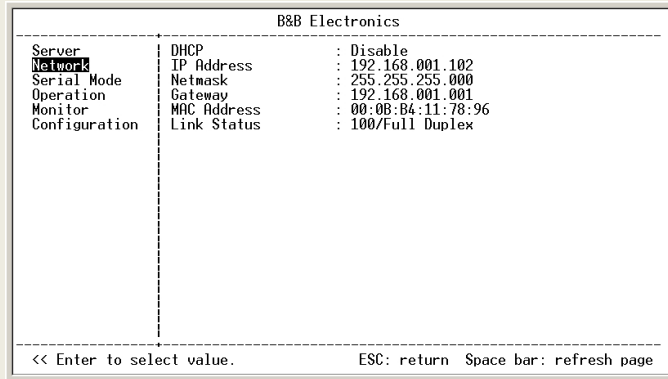


Fig. 3

7. Arrow down to Operation (Fig. 4). Set port number to 2001.

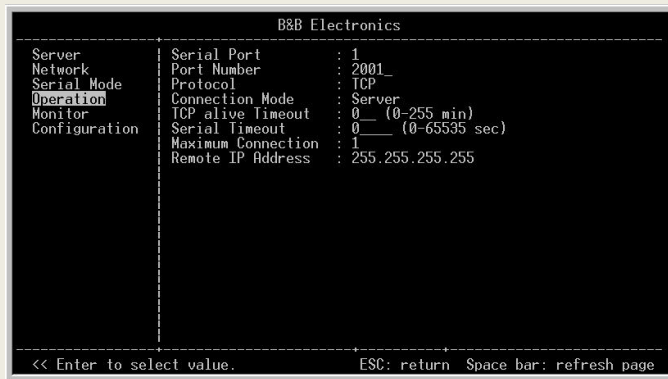


Fig. 4

8. Arrow to Serial Mode. Setup baud rate, data, parity, flow and serial port mode as seen below in Fig. 5.

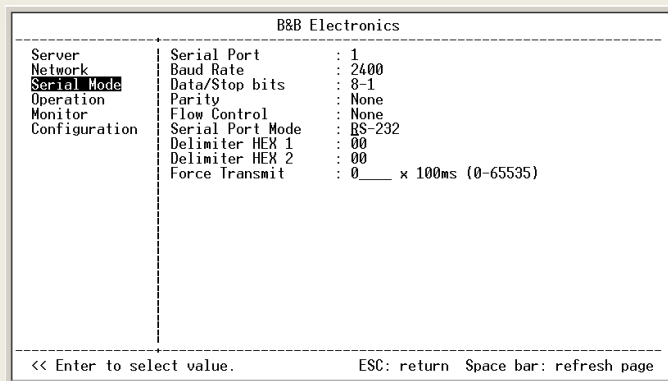


Fig. 5

9. Arrow down to Configuration and hit Save. (Fig. 6)

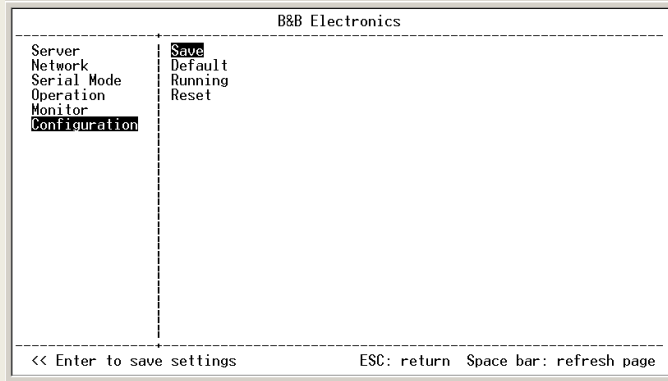


Fig. 6

10. Move the Run/Console dip switch to Run.
11. Cycle power to the ESR 901.
12. This concludes the setup.