

CPRIII Early Release

CPR III Version 6.88 Build 22, and later, has the ability to quickly send pages to groups that are delayed. This is designed for conditions where time switches are to run their normal plan, with the exception of a delay in the morning.

Although this can be done with override plans, the following procedure makes it much easier by producing and sending the plans from the same screen. Since these plans are override plans they will be discarded at midnight the day they are sent.

Notice in Fig. 1 below the addition of the button labeled Early Release Override. Clicking this button starts the process.

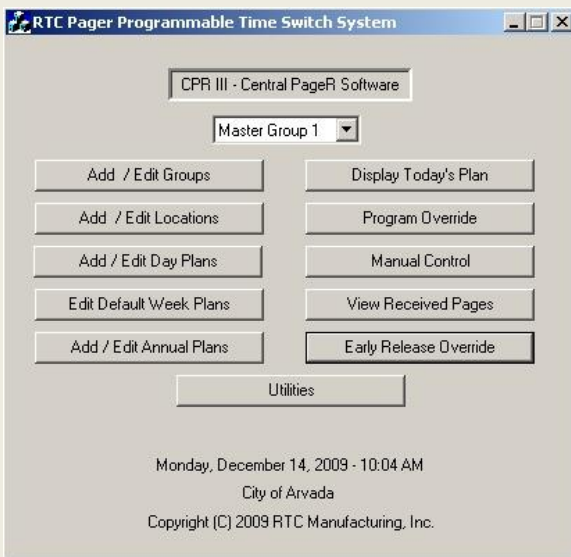


Fig. 1

When you hit this button the screen below is displayed (Fig 2). Notice all the groups displayed in the list box to the left. Select all groups you want delayed or closed.

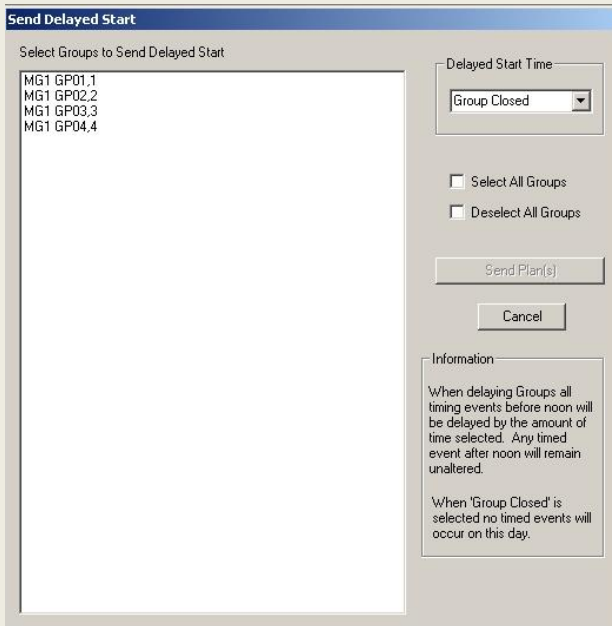


Fig. 2

In the example, we are delaying MG1 GP02 (Fig. 3) by two hours. You can delay several groups by clicking as many as you desire. If you want to delay all groups, click Select All Groups.

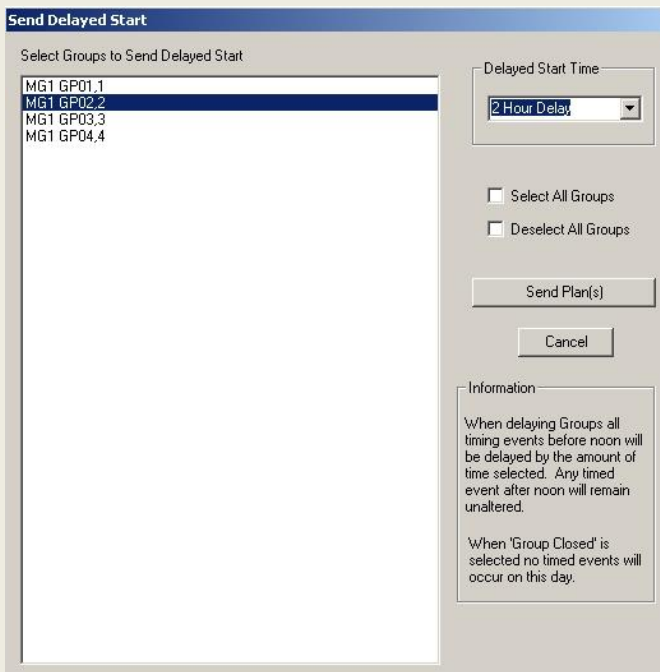


Fig. 3

To send the pages, click the Send Plan(s) button. The message box allows you to cancel this operation if you desire (Fig. 4).

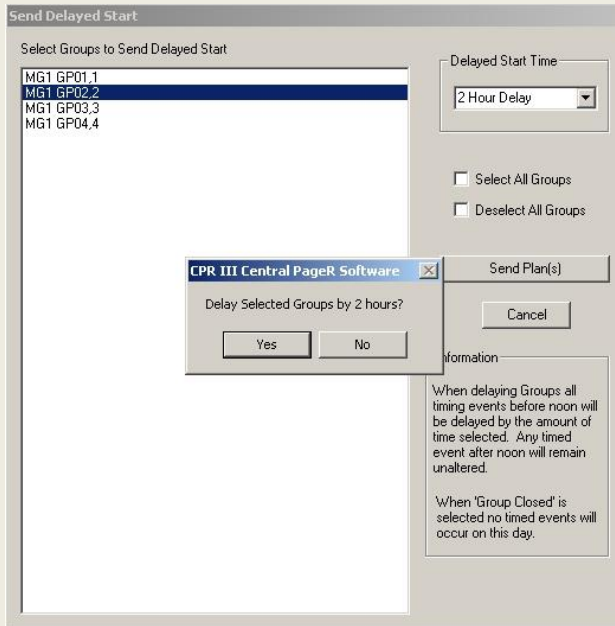


Fig. 4

If you click Yes, the following screen (Fig. 5) appears telling you the pages are being sent. If you have several groups, the pages are split up in messages and may take a few minutes to be sent.

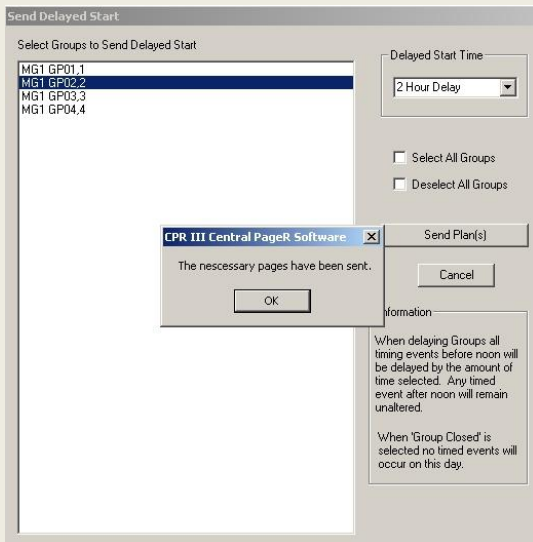


Fig. 5

Once this is done you will see the override display at the bottom of the main screen, telling you the plans are in override (Fig. 6). A message will appear at midnight when the plan is cancelled.



Fig. 6