



RTC Manufacturing, Inc.

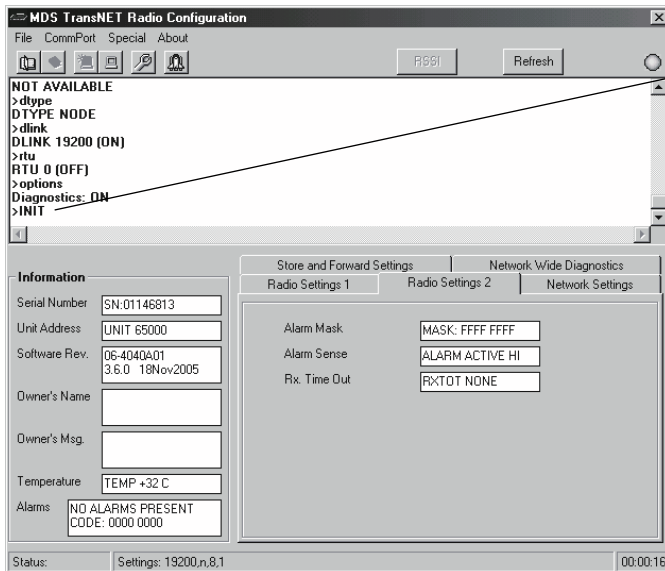
P. O. Box 150189
Arlington, TX 76015

(800) 782-8721
(817) 274-3610 fax

CPR Radio
Radio Programmable Time Switch System

Application Note Number 2

How to reset an MDS Radio to factory defaults



Left click on the lower left corner of the white box.

Type the letters "INIT" then press Enter.

This will reset the radio to its factory defaults.

After resetting the radio

YOU MUST REPROGRAM THE FOLLOWING SETTINGS:

- 1) Radio Settings 1 tab:
Data Baud Rate - set to "2400 8N1"
- 2) Store and Forward Settings tab:
Extension Map: Check All then Program Settings
Primary Extension Addr: NONE
Extension RSSI: NONE
- 3) Left click on the bottom of the white area of the screen.
Type "MRSSI -98" then press Enter.