



RTC Manufacturing, Inc.

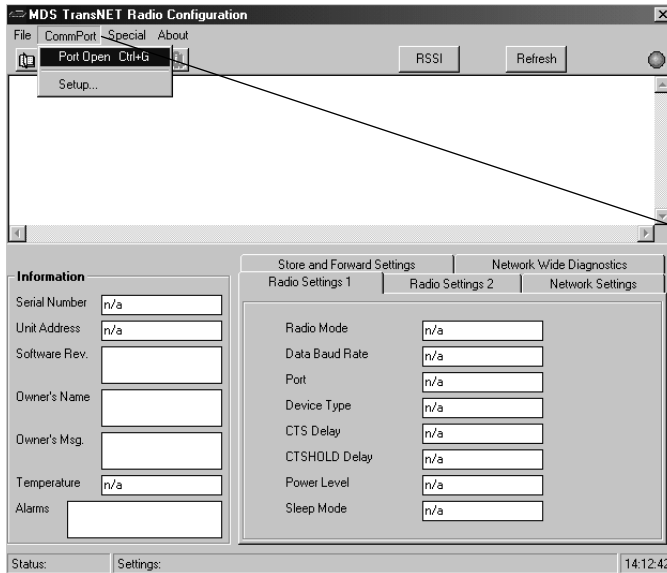
P. O. Box 150189
Arlington, TX 76015

(800) 782-8721
(817) 274-3610 fax

CPR Radio
Radio Programmable Time Switch System

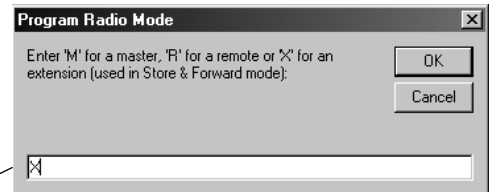
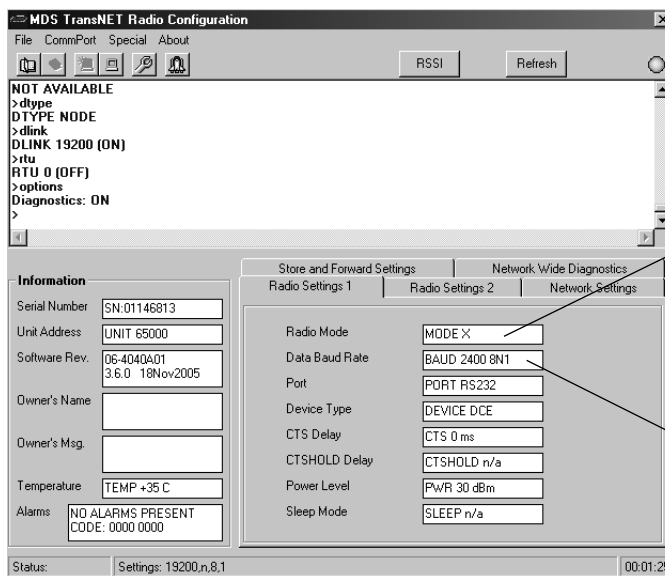
Application Note Number 3
Programming an MDS Repeater

Step 1: Open the Comm Port in a REPEATER

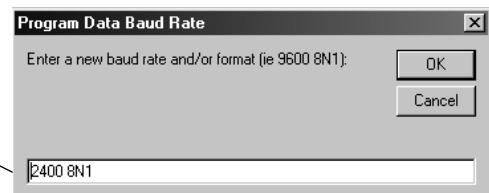


Connect the MDS radio to the COM port of the computer.
Launch the MDS TransNET Radio Configuration software.
Click "CommPort", then "Port Open".

Step 2: Program the Radio Settings 1 in a REPEATER



Left click on the Radio Mode box.
Type "X" and press Enter.



Left click on the Data Baud Rate box.
Type "2400 8N1" and press Enter.



RTC Manufacturing, Inc.

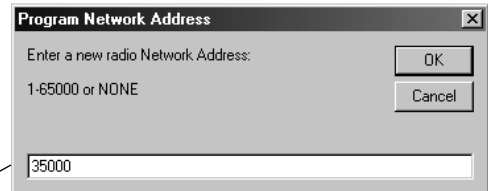
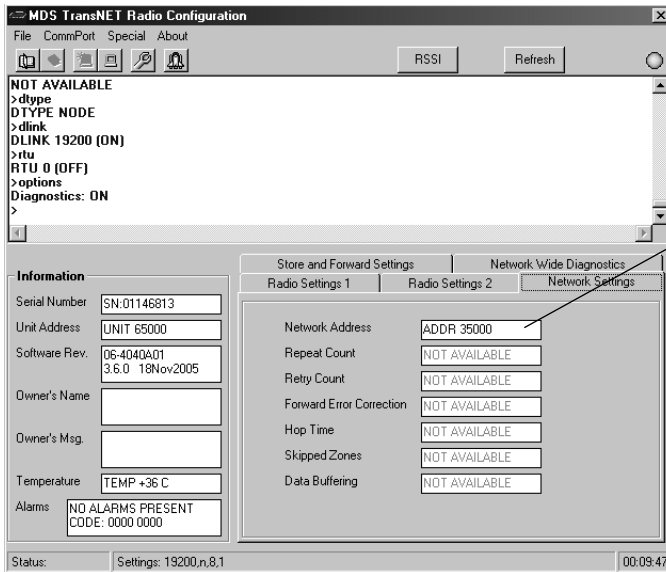
P. O. Box 150189
Arlington, TX 76015

(800) 782-8721
(817) 274-3610 fax

**CPR Radio
Radio Programmable Time Switch System**

**Application Note Number 3
Programming an MDS Repeater**

Step 3: Program the Network Setting in a REPEATER



Click on the Network Settings tab.

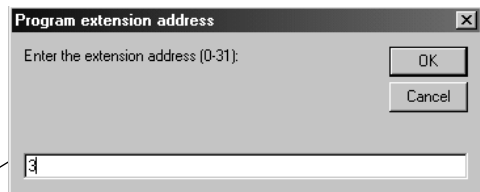
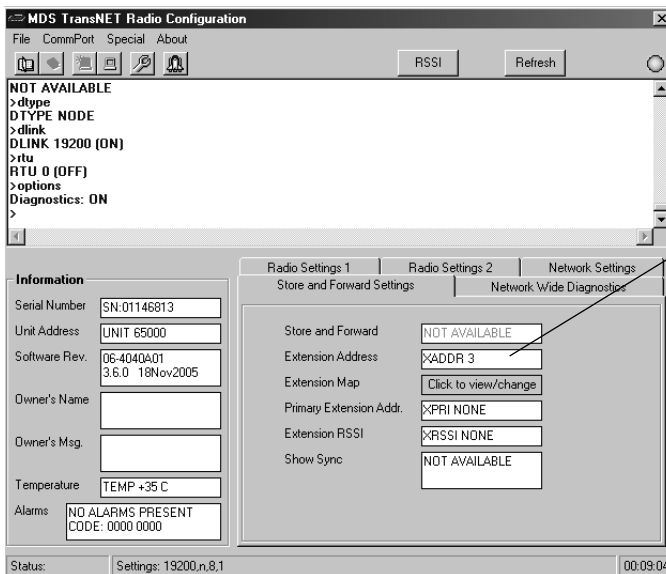
Left click on the Network Address box.

Type in the network address and press Enter.

WARNING: The network address is pre-assigned by RTC at the factory. Contact RTC prior to changing this address. This radio will not work if the network address is not assigned correctly.

All other entries on the screen stay as defaulted.

Step 4: Program the Store and Forward Settings in a REPEATER



Left click on the Extension Address box.

Type the repeater number then press Enter.
(this example shows repeater number 3)

WARNING: Repeater numbers are from 1 to 31. The number 0 is the Master radio. Use caution not to duplicate repeater numbers as the system will not work if you have more than one repeater with the same extension address.



RTC Manufacturing, Inc.

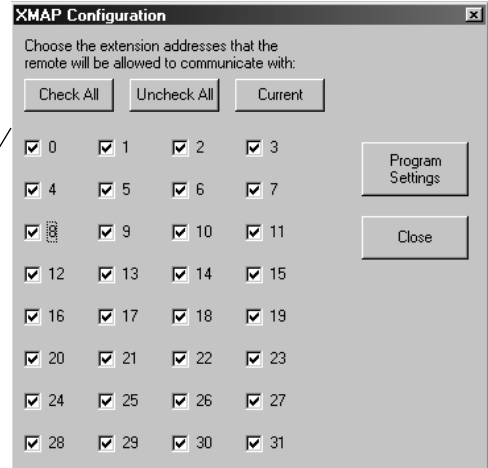
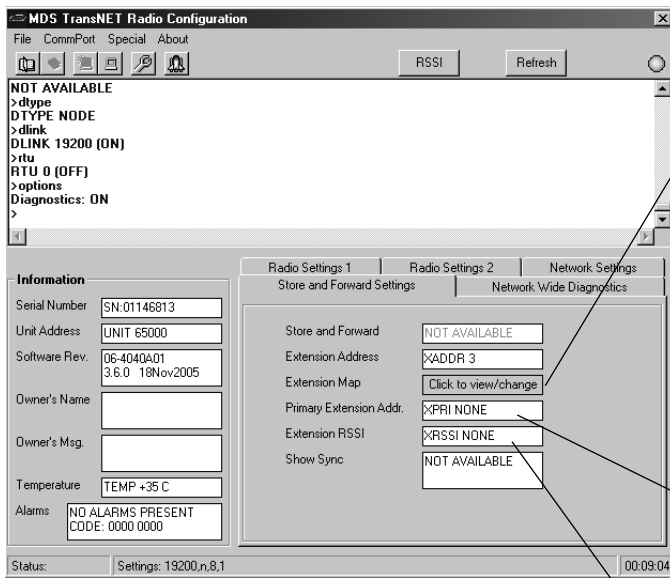
P. O. Box 150189
Arlington, TX 76015

(800) 782-8721
(817) 274-3610 fax

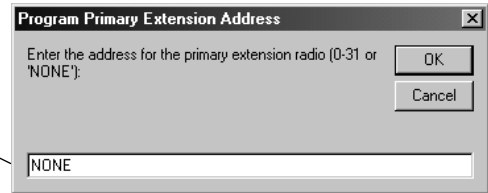
**CPR Radio
Radio Programmable Time Switch System**

**Application Note Number 3
Programming an MDS Repeater**

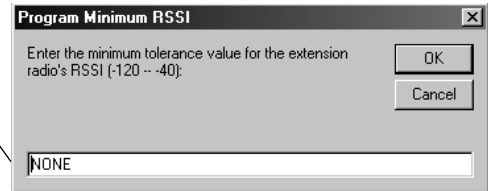
Program the Store and Forward Settings in a REPEATER (continued)



Left click on the Extension Map box.
Click Check All, then Program Settings.



Left click on the Primary Extension Addr box.
Type "NONE", then press Enter.



Left click on the Extension RSSI box.
Type "NONE", then press Enter.



RTC Manufacturing, Inc.

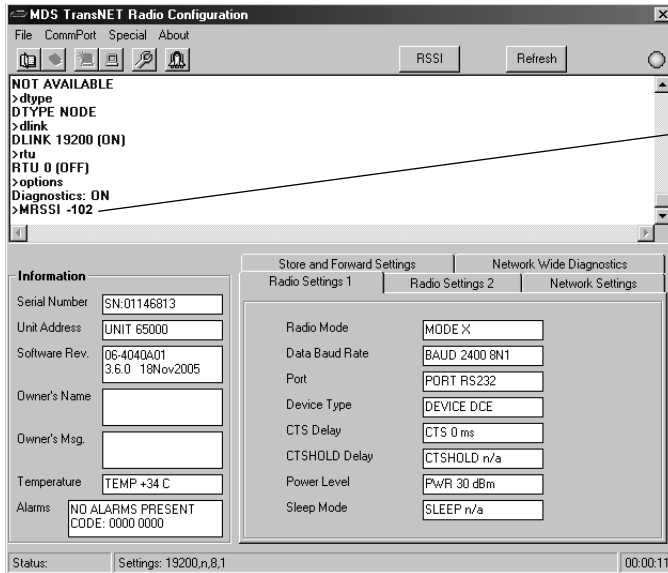
P. O. Box 150189
Arlington, TX 76015

(800) 782-8721
(817) 274-3610 fax

CPR Radio
Radio Programmable Time Switch System

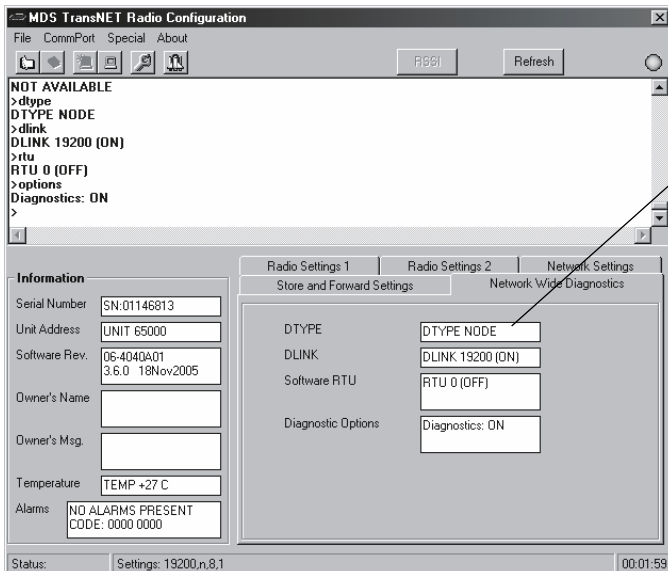
Application Note Number 3
Programming an MDS Repeater

Step 5: Program the MRSSI in a REPEATER



Left click on the bottom of the white area of the screen.
Type "MRSSI -102" and press Enter.
(note there is a space between MRSSI and -102)
"PROGRAMMED OK" will be displayed.

Step 6: Program the Network Wide Diagnostics in a REPEATER



Left click on the DTYPE box.
Click on the NODE button.

